

MHELIOS



Midea MHELIOS Home Energy Storage System (Three-Phase)



Midea MHELIOS Home Energy Manager (Three-Phase)

Midea MHELIOS Home Energy Storage System

About Midea

Midea Group is a Fortune 500 company, with robust business growth across multiple sectors. We believe in humanizing-technology and provide customized solutions for smart home appliances, electro-mechanical, building technologies, robotic&automation and digital innovation.

#278

2023 Fortune
Global 500

#199

2023 Forbes
Global 2000

#36

Brand Finance 2022
Top 100
Most Valuable Tech Brands

200+

Countries & Regions of
Operation

A/A3/A

S&P/Moody's/Fitch
Credit Ratings

160,000+

Employees

31

R&D centers
in 12 countries
all around the world

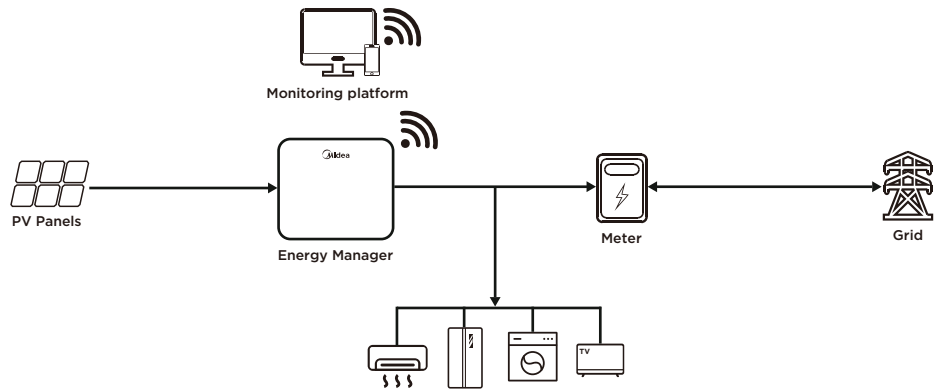
40

Production centers
in 14 countries
all around the world



Midea MHELIOS Home Energy Manager

M1-T5/6/8/10K



Intelligent Management

- High self-consumption with optimized built-in energy management function

Quick Installation

- Easy plug and play installation, touch free commissioning with smartphone

Flexible application

- Battery ready, meet multi-scenarios: PV installation only, battery added and battery extension capability

Easy to maintenance

- Free online monitoring, All information about PV system is available anytime and anywhere.

Inverter Model	M1-T5K	M1-T6K	M1-T8K	M1-T10K
Input (PV)				
Recommended max. PV power	7500Wp	9000Wp	1200Wp	15000Wp
Max. input voltage	1000V			
MPPT operating voltage range	160V-800V			
Max. input current per MPPT	14A			
Number of MPP trackers	2			
Input (Battery)				
Compatible Battery	Midea Energy Storage Unit			
Operating voltage range	600-980V			
Max. charge/discharge power	5000W	6000W	8000W	10000W
Output				
Grid connection	Three phase			
Max. Apparent Power	5500VA	6600VA	8800VA	11000VA
Rated output voltage	220 V / 380 V, 230 V / 400 V, 3W / N+PE			
General				
Ingress protection	IP65			
Dimension(W/H/D, mm) & Weight	521*516*196mm,33.6kg			
Efficiency				
Max. efficiency	98%			
Standard Compliance				
EMC	EN 61000-6-1,EN 61000-6-3,EN 62920			
Safety	IEC62109-1, IEC62109-2			
Grid	EN 50549-1, VDE-AR-N 4105, CEI 0-21,G99, UTE C15-712-1, UNE 217002 ,TR321,TR322,C10/11			
Warranty				
Warranty	10 years			

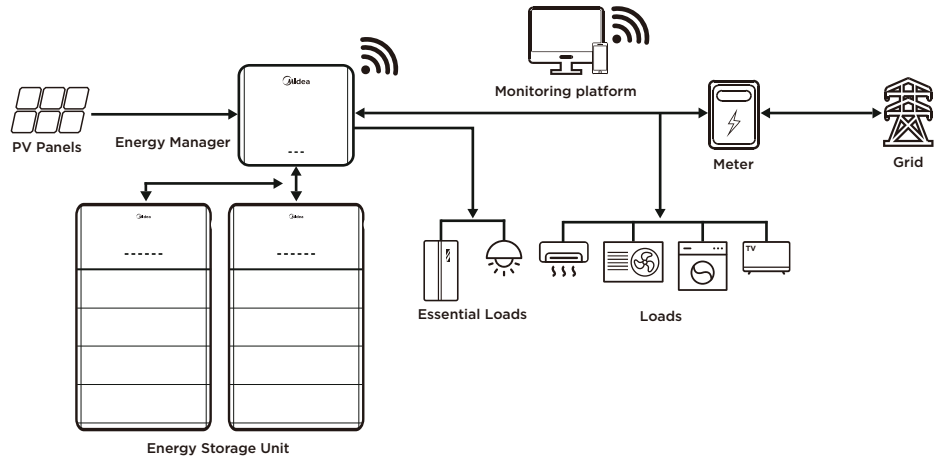
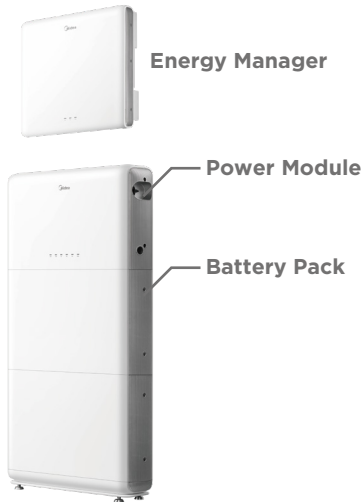
*All specifications are subject to change without notice.



Midea MHELIOS Home Energy Storage System

M1-T5/6/8/10K

H1-(5-40)-E0



Higher production

- More energy using DC coupled solution architecture that stores PV power directly to the battery without AC conversion losses

Intelligent Management

- Integrated features (back-up power, energy management function, etc.) maximize cost savings

Safety and reliable

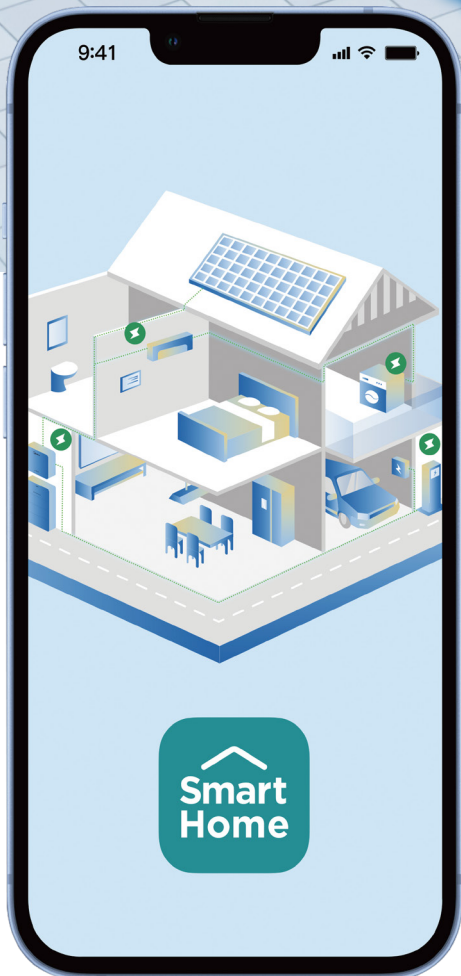
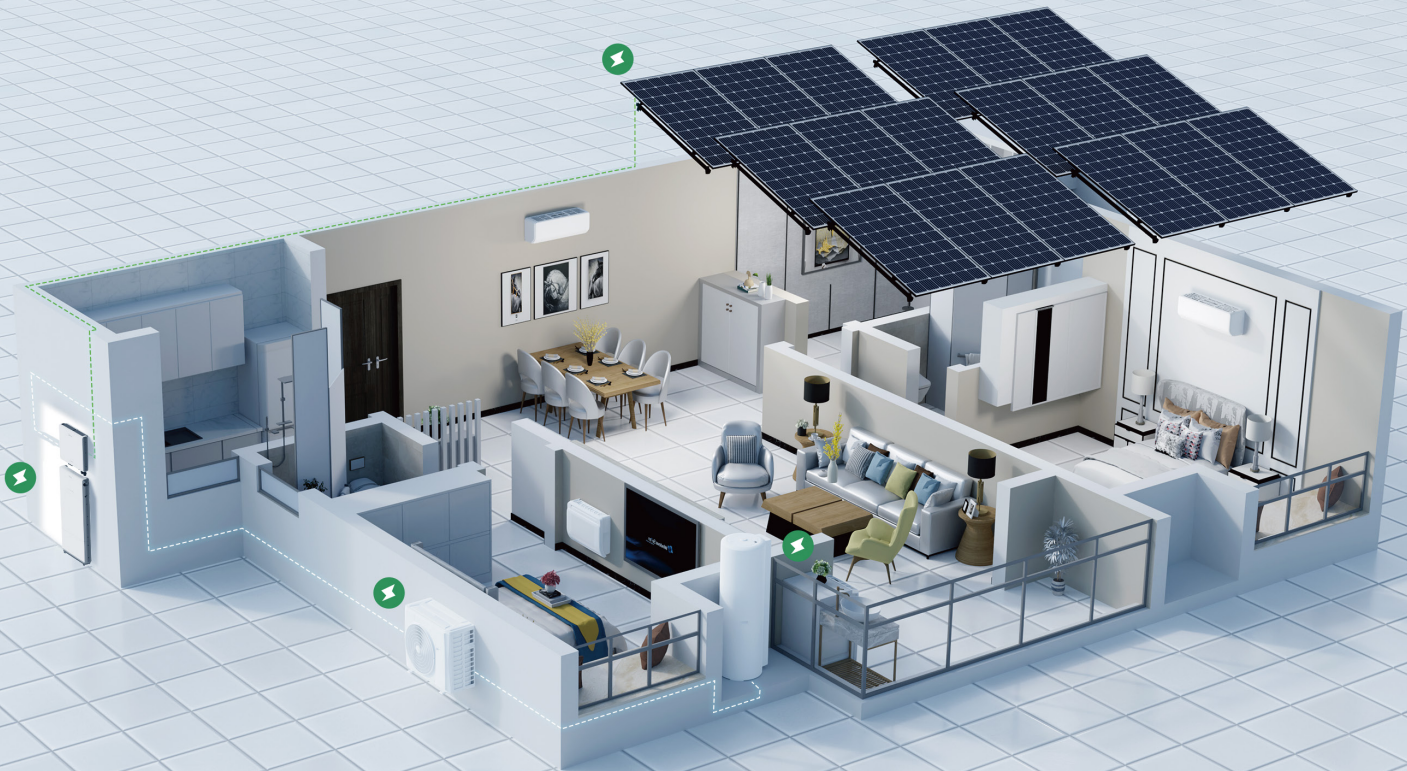
- Electrical isolation and BMS protection functions ensure battery safety

Flexible application

- Modular design for easy installation and transportation

Inverter Model	M1-T5K	M1-T6K	M1-T8K	M1-T10K
PV Input				
Recommended max. PV power	7500Wp	9000Wp	1200Wp	15000Wp
Max. input voltage	1000V			
Max. input voltage range	160V-800V			
Max. input current per MPPT	14A			
Number of MPPT	2			
Output				
Max. Apparent Power(Grid)	5500VA	6600VA	8800VA	11000VA
Max. Apparent Power(Backup)	5500VA	6600VA	8800VA	11000VA
Rated output voltage(Vca)	220 V / 380 V, 230 V / 400 V, 3W / N+PE			
Battery Model				
H1-(5-40)-E0				
Battery pack capacity	5kWh, 48V			
Power module rated power	5kW			
Operating voltage range	600-980V			
Max. usable energy	40kWh			
Max. charge/discharge power	10kW			
Cell technology	LiFePO ₄			
Standard Compliance				
Inverter	EN 61000-6-1/3, EN 62920, IEC62109-1/2, EN 50549-1, VDE-AR-N 4105, CEI 0-21, G99, UTE C15-712-1, UNE 217002, TR321, TR322, C10/11			
Battery	IEC/EN 62109-1, IEC/EN 62477, EN 61000-6-1, EN 61000-6-3, IEC62619, UN38.3, IEC/EN 62040-1			
Warranty				
Inverter	10 years			
Battery	10 years			

*All specifications are subject to change without notice.



All-In-One Green Smart Home Solution

Smart control helps you live a smart, green lifestyle





make yourself at home



✉ infomess@midea.com

🌐 <https://www.midea.com/global/mhelios>