

**Stand Fan  
3000 SERIES**

# **USER MANUAL**

**MF-16FS23C-WT  
MF-16FS23C-BK**

Warning notices: Before using this product, please read this manual carefully and keep it for future reference. The design and specifications are subject to change without prior notice for product improvement. Consult with your dealer or manufacturer for details. The diagram above is just for reference. Please take the appearance of the actual product as the standard.

## THANK YOU LETTER

Thank you for choosing Midea! Before using your new Midea product, please read this manual thoroughly to ensure that you know how to operate the features and functions that your new appliance offers in a safe way.

# CONTENTS

THANK YOU LETTER .....	01
SAFETY INSTRUCTIONS .....	02
SPECIFICATIONS .....	04
PRODUCT OVERVIEW .....	05
PRODUCT INSTALLATION .....	06
OPERATION INSTRUCTIONS .....	10
CLEANING AND MAINTENANCE .....	11
TROUBLESHOOTING .....	12
TRADEMARKS, COPYRIGHTS AND LEGAL STATEMENT .....	13
DISPOSAL AND RECYCLING .....	14
DATA PROTECTION NOTICE .....	15

# SAFETY INSTRUCTIONS

## Intended Use

The following safety guidelines are intended to prevent unforeseen risks or damage from unsafe or incorrect operation of the appliance. Please check the packaging and appliance on arrival to make sure everything is intact to ensure safe operation. If you find any damage, please contact the retailer or dealer. Please note modifications or alterations to the appliance are not allowed for your safety concern. Unintended use may cause hazards and loss of warranty claims.

## Explanation of Symbols



### Danger

This symbol indicates that there are dangers to the life and health of persons due to extremely flammable gas.



### Warning of electrical voltage

This symbol indicates that there is a danger to life and health of persons due to voltage.



### Warning

The signal word indicates a hazard with a medium level of risk which, if not avoided, may result in death or serious injury.



### Caution

The signal word indicates a hazard with a low degree of risk which, if not avoided, may result in minor or moderate injury.



### Attention

The signal word indicates important information (e.g. damage to property), but not danger.



### Observe instructions

This symbol indicates that a service technician should only operate and maintain this appliance in accordance with the operating instructions.

Read these operating instructions carefully and attentively before using/commissioning the unit and keep them in the immediate vicinity of the installation site or unit for later use!

## **Caution**

- Read Rules for Safe Operation and Instructions carefully.
- This appliance is not intended for use by persons (including children) with reduced physical, sensory or mental capabilities, or lack of experience and knowledge, unless they have been given supervision or instruction concerning use of the appliance by a person responsible for their safety. Children should be supervised to ensure that they do not play with the appliance.
- When the fan was assembled, the rotor blade guard shall not be taken off anymore.
  - Prior to cleaning, unplug the fan.
  - The rotor guard shall not be disassembled/opened to clean the rotor blades.
  - Wipe the fan enclosure and rotor blade guard with a slightly damp cloth.
- Never insert fingers, pencils, or any other object through the grille when fan is running.
- Disconnect fan when moving from one location to another.
- Indoor and household use only.

## **Warning**

- If the supply cord is damaged, it must be replaced by manufacturer or its service agent or a similarly qualified person in order to avoid a hazard.
- To protect against the risk of electrical shock, do not immerse the unit, cord or plug in water or other liquid.
- When the appliance is not in use and before cleaning, unplug the appliance from the outlet.
- Ensure that the fan is switched off from the supply mains before removing the guard.

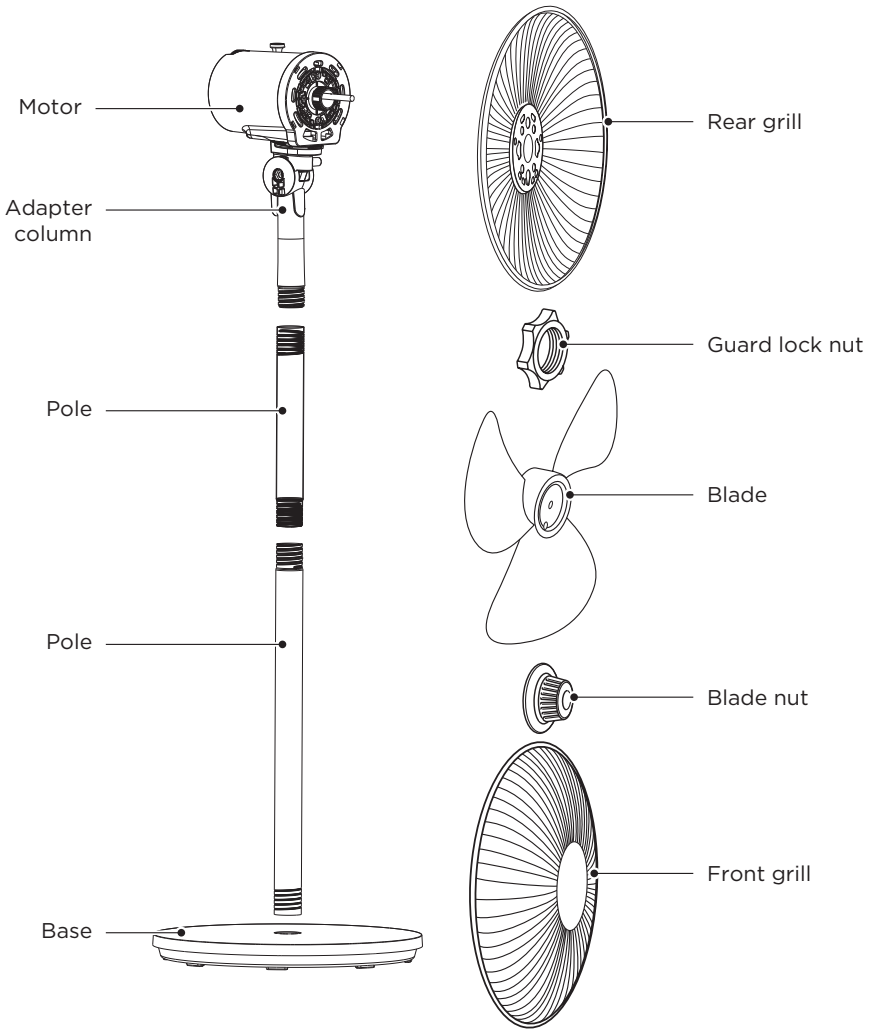
# SPECIFICATIONS

<b>Product Model</b>	<b>MF-16FS23C-WT/MF-16FS23C-BK</b>
Voltage	220-240V-
Frequency	50Hz
Power	50W

---

# PRODUCT OVERVIEW

## Part Name



### NOTE

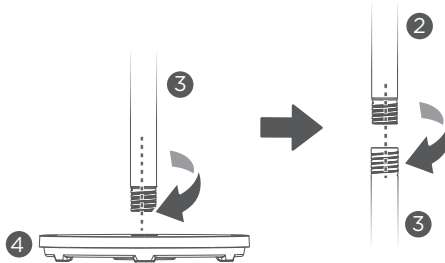
All the pictures in this manual are for explanation purpose only. Any discrepancy between the real object and the illustration in the drawing shall be subject to the real subject. Remove parts from the component before performing installation.

# PRODUCT INSTALLATION

## Installation Procedures

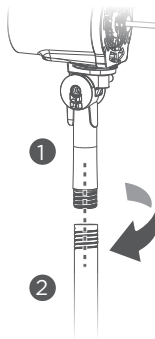
### 1 Install the column

Align the lower column ③ with the chassis connector ④, turn clockwise and tighten to secure. Then align the upper column ② with the lower column ③, turn clockwise and tighten to secure.



### 2 Install The Head Stabilizer Column

Insert the head stabilizer column ① into the lower column connector ②, then turn clockwise to tighten and secure.

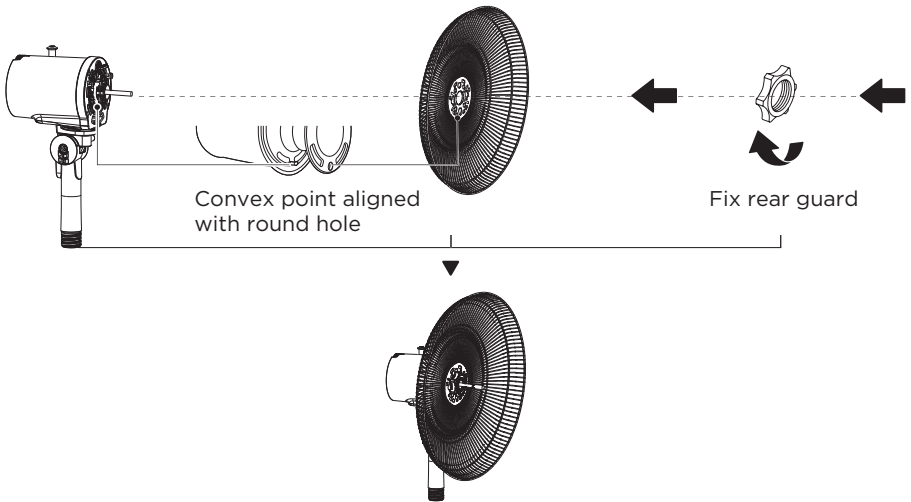




### 3 Rear guard installation

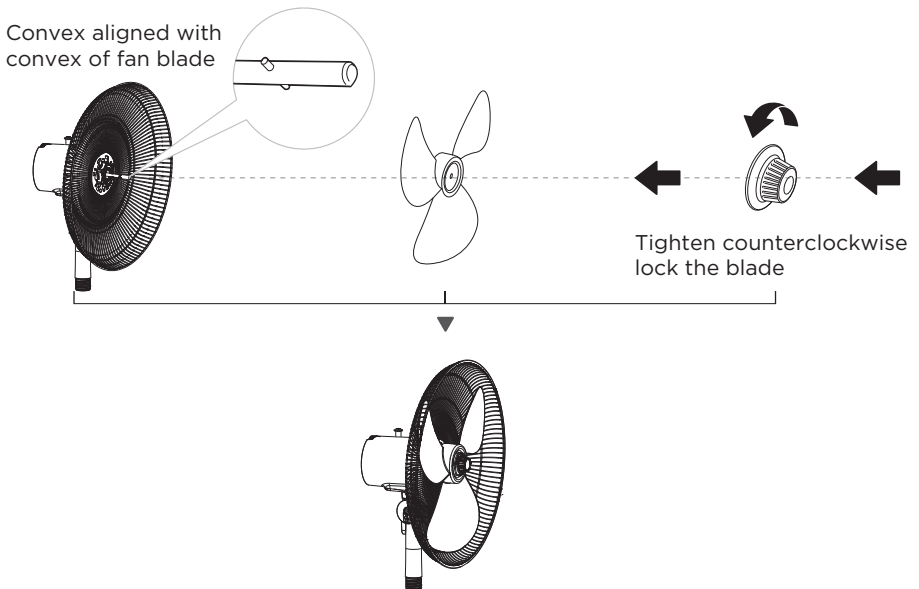
3.1 Please unscrew the guard lock nut counterclockwise first.

3.2 Align the front cover of the motor and the rear guard, hang them and lock with the guard lock nut.



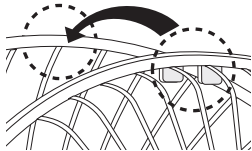
### 4 Blade installation

Fix rear guard with convex point aligned with round hole.

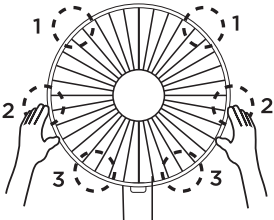


**5 Front Guard Installation**

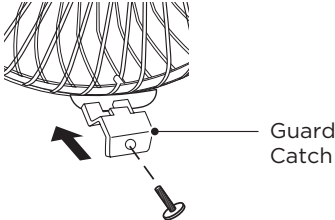
5.1 Align catch of the front guard with the illustrated position of the rear guard.



5.2 Press guards sequentially with both hands.

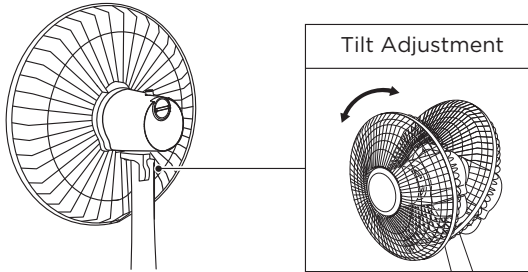


5.3 Self-catch installation.



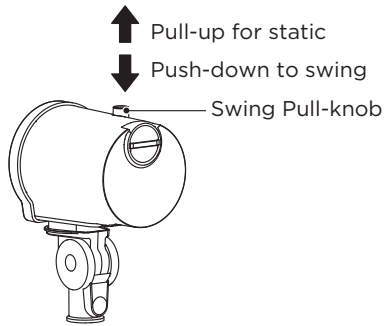
## 6 Tilt angle adjustment

To adjust the air flow upward or downward, push the grilles lightly to the desired direction.



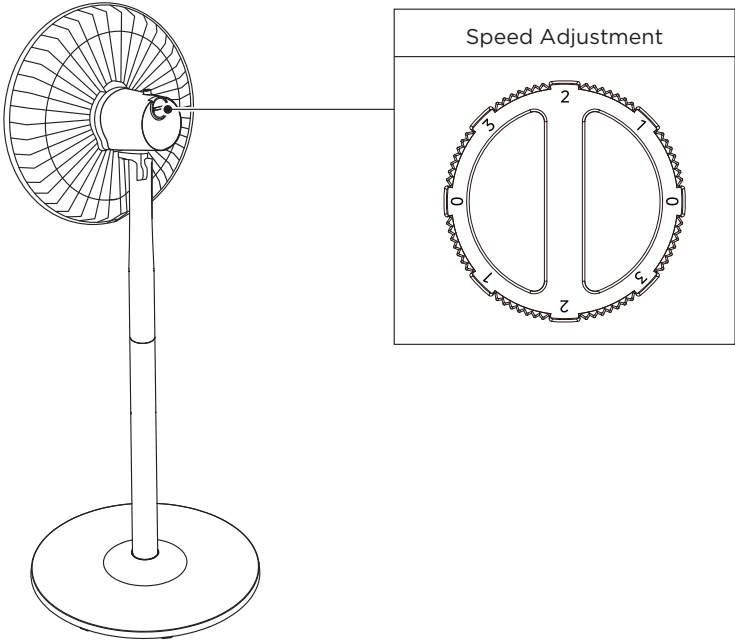
## 7 Oscillation control

To make the fan oscillate, press the clutch knob located on the top of the motor housing. To get the directional airflow, pull the clutch knob up to its initial position.



# OPERATION INSTRUCTIONS

## Speed Knob Operations



	Function description
0	<ul style="list-style-type: none"><li>• Stop the product.</li></ul>
1	<ul style="list-style-type: none"><li>• Low speed.</li></ul>
2	<ul style="list-style-type: none"><li>• Medium speed.</li></ul>
3	<ul style="list-style-type: none"><li>• High speed.</li></ul>

# CLEANING AND MAINTENANCE

The fan requires minimal maintenance. Do not try to fix it by yourself. Refer it to qualified service personnel if service is needed.


1. Before cleaning and assembling, unplug the fan power.
2. To ensure adequate air circulation to the motor, keep vents at the rear of the motor free of dust. Do not disassemble the fan to remove dust.  
Please wipe the exterior parts with a soft cloth soaking a mild detergent.
3. Do not use any abrasive detergent or solvents to avoid scratching the surface.
4. Do not use any of the following as a cleaner: gasoline, thinner.
5. Do not allow water or any other liquid entering into the motor housing or interior parts.
6. Be sure to unplug from the electrical supply source before cleaning.
7. Plastic parts should be cleaned with a soft cloth moisten with mild soap Thoroughly remove soapsuds with dry cloth.

# TROUBLESHOOTING

Operation of your appliance can lead to errors and malfunctions. The following tables contain possible causes and notes for resolving an error message or malfunction. It is recommended to read the table below carefully in order to save your time and money that may cost for calling to the service center.

Problem	Cause	Solution
The machine does not work properly after installed	• The power cable is not plugged in or has poor contact.	Make sure the plug is properly inserted into the socket.
	• The switch on the body is not turned on.	Turn on the switch on the body.

# TRADEMARKS, COPYRIGHTS AND LEGAL STATEMENT

 Midea logo, word marks, trade name, trade dress and all versions thereof are valuable assets of Midea Group and/or its affiliates (“Midea”), to which Midea owns trademarks, copyrights and other intellectual property rights, and all goodwill derived from using any part of an Midea trademark. Use of Midea trademark for commercial purposes without the prior written consent of Midea may constitute trademark infringement or unfair competition in violation of relevant laws.

This manual is created by Midea and Midea reserves all copyrights thereof. No entity or individual may use, duplicate, modify, distribute in whole or in part this manual, or bundle or sell with other products without the prior written consent of Midea.

All the described functions and instructions were up to date at the time of printing this manual. However, the actual product may vary due to improved functions and designs.

# DISPOSAL AND RECYCLING

## Important Instructions for Environment

Compliance with the WEEE Directive and Disposing of the Waster Product:  
This product complies with EU WEEE Directive (2012/19/EU). This product bears a classification symbol for waster electrical and electronic equipment (WEEE).

This symbol indicates that this product shall not be disposed with other household wastes at the end of its service life. Used device must be returned to official collection point for recycling of electrical electronic devices. To find these collection systems please contact to your local authorities or retailer where the product was purchased. Each household performs important role in recovering and recycling of old appliance. Appropriate disposal of used appliance helps prevent potential negative consequences for the environment and human health.



## Compliance with RoHS Directive

The product you have purchased complies with EU RoHS Directive (2011/65/EU). It does not contain harmful and prohibited materials specified in the Directive.

## Package Information

Packaging materials of the product are manufactured from recyclable materials in accordance with our National Environment Regulations. Do not dispose of the packaging materials together with the domestic or other wastes. Take them to the packaging material collection points designated by the local authorities.





# DATA PROTECTION NOTICE

For the provision of the services agreed with the customer, we agree to comply without restriction with all stipulations of applicable data protection law, in line with agreed countries within which services to the customer will be delivered, as well as, where applicable, the EU General Data Protection Regulation (GDPR).

Generally, our data processing is to fulfil our obligation under contract with you and for product safety reasons, to safeguard your rights in connection with warranty and product registration questions. In some cases, but only if appropriate data protection is ensured, personal data might be transferred to recipients located outside of the European Economic Area.

Further information are provided on request. You can contact our Data Protection Officer via **MideaDPO@midea.com**. To exercise your rights such as right to object your personal data being processed for direct marketing purposes, please contact us via **MideaDPO@midea.com**. To find further information, please follow the QR Code.









*make yourself at home*



[www.midea.com](http://www.midea.com)

© Midea 2022 all rights reserved