
VACUUM CLEANER

OPERATION INSTRUCTIONS MANUAL

MVC-C1211S-BL & MVC-C1211S-RD



Midea Scott & English Electronics Sdn Bhd
16, Jalan Chan Sow Lin, 55200 Kuala Lumpur.
www.midea.com/my



Please read this Instruction Manual carefully before operating, and keep it properly.

Contents

Safety Introduction	2
Product Introduction	4
Product Operation	5
Product Maintenance	6
Trouble Shooting	7

Safety Introduction

1. For the first operation, it is advisable to read the manual carefully before hand and keep it properly for future use.
2. Before the first operation, make sure the dust cup or the dust bag is properly installed.
3. Make sure the power supply is 220-240V~ 50/60Hz
4. Do not vacuum water and inflammable material.
5. Do not vacuum burning material and ashes.
6. Do not use the machine without a motor protection filter filled.
7. Please change the dust bag immediately when it was damaged.
8. Do not store or use the machine close to high temperature places.
9. Do not let children use the machine in case of danger.
10. If abnormal noise, smell, smoke or any other failure or breakage is found during the operation, you should turn off the switch and unplug it. Then contact with your service center for repair. Do not repair by yourself.

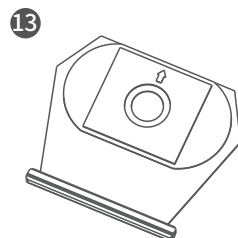
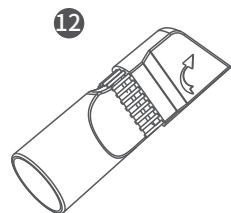
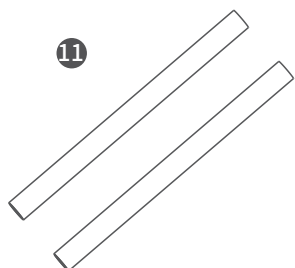
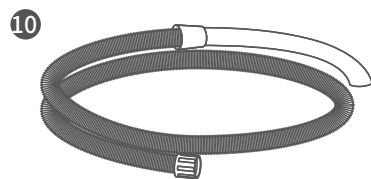
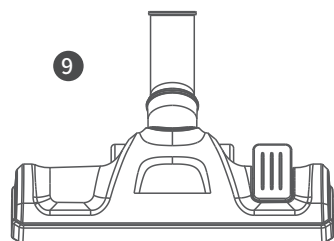
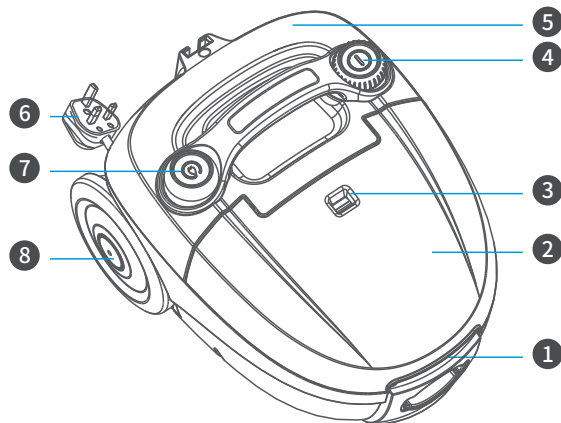
11. If the supply cord is damaged, it must be replaced by the manufacturer or its service agent or a similarly qualified person in order to avoid a hazard.
12. This appliance is not intended for use by persons (including children) with reduced physical, sensory or mental capabilities, or lack of experience and knowledge, unless they have been given supervision or instruction concerning use of the appliance by a person responsible for their safety.
13. Children should be supervised to ensure that they do not play with the appliance.

Warning:

The plug must be removed from the power socket before any maintenance or replacement. If the power cord is damaged, replace them only by the factory or maintenance center or similarly qualified persons.

Product Introduction

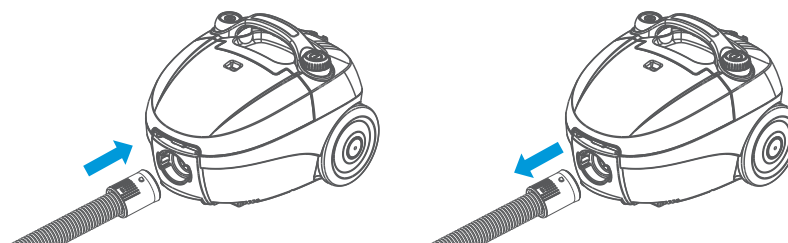
- 1 Lock Clip
- 2 Front Cover
- 3 Dust Full Indicator
- 4 On/off Pedal
- 5 Back Cover
- 6 Power Cord
- 7 Cord Rewinding Pedal
- 8 Wheel
- 9 Main Brush
- 10 Hose
- 11 Plastic Tube
- 12 2 in 1 Crevice Tool
- 13 Bag



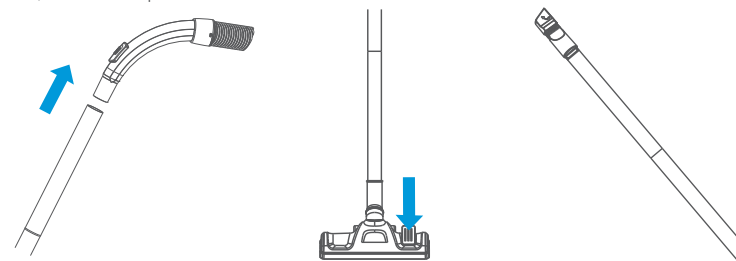
Product Operation

Illustration of the main unit

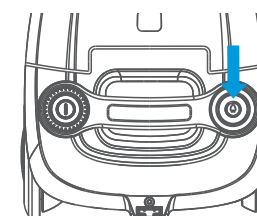
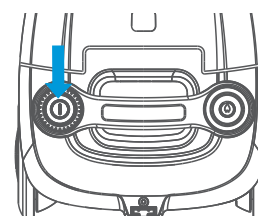
- 01** Connect the hose accessories:
 Insert the hose end into the hose socket at the front cover and then hook it.
 Remove the hose accessories:
 Press the adaptors at both side of the hose end and then pull the hose accessories.



- 02** Connect the plastic tube to the curves end of the hose.
 Connect different nozzle tools to the tube for different cleaning purpose: floor brush (adjust to the type of ground) for carpet or floor; combine brush & nozzle for sofa, wall surface, curtain, corner or space between furniture and etc.



- 03** Turn on the machine:
 Insert the plug of cord into the power socket which conform to that on the label for power supply, and press the on/off switch pedal, the machine could start working.
 Cord rewinding:
 Hold the plug and pull out the cord; press the cord rewinding pedal, that power cord will be drawn in.

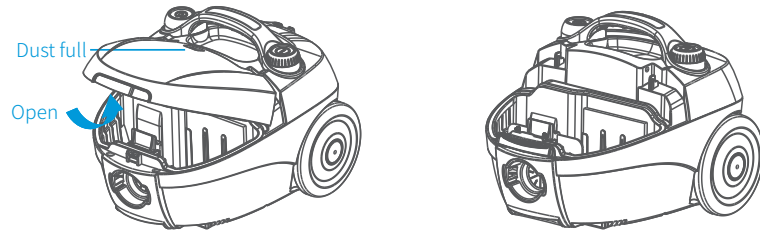


Product Maintenance

Dust cleaning: To maintain the suction power of the vacuum cleaner, please clean the dust regularly.

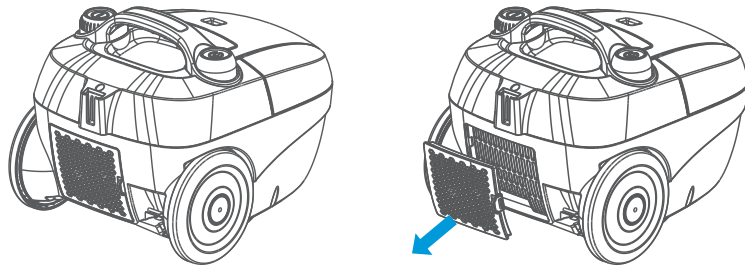
01 Change the dust bag:

When the wind indicator turns to be red or loss of suction is noticed, it is time to empty the dust bag. Please wash the bag or replace with new bag if the bag is damage. Open the front cover by pressing front cover locker. Take out the bag then empty it.

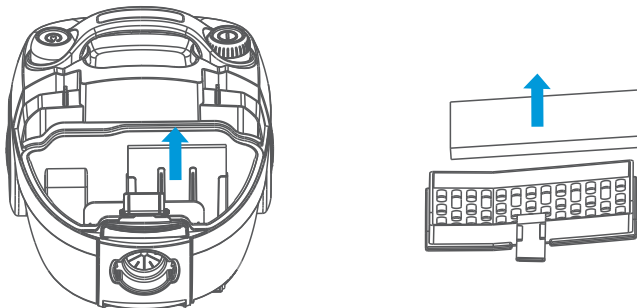


02 Exchange the outlet filter:

clip down and remove the outlet cover by hands for exchange of filter.



03 The motor protection filter should be cleaned or exchanged after it is dirt.



TROUBLESHOOTING

In case of malfunction, please refer to the following table

Problem	Possible reason	Solution
The vacuum cleaner does not switch on	<ul style="list-style-type: none">- too much dust in the bag- filter is blocked- brush duct is blocked- hasn't been fully dried after washing	<ul style="list-style-type: none">- empty the dust bag in time- clean the sponge filter- clean the blockage- dry the sponge filter in cool place after washing
The machine does not work	<ul style="list-style-type: none">- The power plugs are loose on the socket or the power socket is not live-The switch fails to be opened	<ul style="list-style-type: none">- Inspect whether power plugs are tight or not or the socket is live or not- Press the switch button
The machine suddenly stops	<ul style="list-style-type: none">- The dust bag is full- The sponge filter is blocked- Suction inlet of brush or the other accessory is blocked	<ul style="list-style-type: none">- empty the dust bag in time- clean the sponge filter- clean the blockage

If the problem still can't be solved, please contact local service center.